



SPACE-RAY®

SBF – IP55 BIG FOOT Poultry Radiant Tube Heater

Model rating: SBF 25-IP55 – 23.0kW
(80.000 Btu)

- Big Foot's unique design produces a large rectangular heat pattern which matches shape of poultry house
- 19° optimised reflector angle which minimises convective wash, giving better radiant throw for even temperature distribution
- Provides a large, even heat footprint, thus promoting improved bird growth
- Efficient and cost saving heating method **WITH SAVINGS UP TO 25% VS WARM AIR**
- Can be flued to reduce CO2 emissions in house
- IP55 burner box and fan, complete with fresh air flexible Connector, clips and outlet screen
- Flake free emitter tube surface – for safer and cleaner working environment
- 3 – year limited warranty on complete emitter assembly



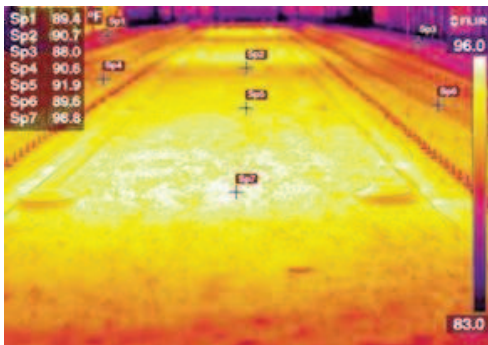
SPACE-RAY®



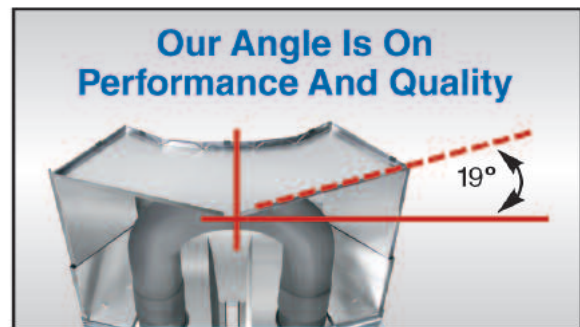
SPACE-RAY®

SPECIFICATION GUIDE – SBF-IP55 BIG FOOT Radiant ‘U’ tube heater	
Model No.	SBF 25-IP55
Heat Input, kW Hs	23.45
Heat Input, kW Hi	21.86
Length mm - A	4000
Width mm - B	650
Height mm - C	175
Weight Kg	47
Gas Connection	R - 1/2
Supply Pressure	Natural Gas - 20mbar Propane - 37mbar
Electrical Supply	230v~50Hz 125W, Current rating 0.55A, fuse externally 3A
Flue Diameter	127mm Dia. or 100mm Dia.
Air Inlet Connection	101.6mm Dia.

Infrared Photography Shows The **Big Foot™** Radiant Tube Brooder's Large, Even Heat Pattern At Litter Level



Big Foot's unique design produces a large rectangular heat pattern

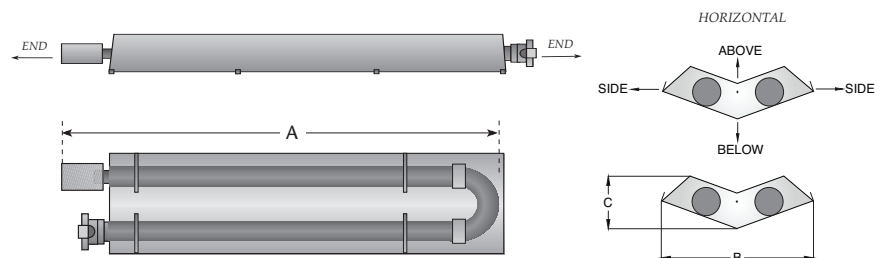


The reflector angle of Space-Ray's Big Foot Radiant Tube Brooder was engineered to an optimum angle of 19° to minimize convective wash. This produces a large, even heating footprint.

MINIMUM CLEARANCES TO COMBUSTIBLE MATERIAL - MM				
Model No.	SIDE	ABOVE	BELOW	END
SBF-IP55 25	910	300	1750	810



IP55 rated burner box and fan



SPACE-RAY®

For more information contact:

Distributor/Agent:

Gas Fired Products (UK) Ltd, Chapel Lane, Claydon, Ipswich, Suffolk IP6 0JL UK
Telephone: (01473) 830551 Fax: (01473) 832055 Email: info@spaceray.co.uk Website: www.spaceray.co.uk

We reserve the right to alter specifications without prior notice.

FACTORIES: ■ IPSWICH, ENGLAND ■ CHARLOTTE, N.C., U.S.A.