

XP line
small size, great power



Main feature

The main feature of the XP40 is the color display screen (3.5") with 320x240 dots resolution with led backlighting. XP40 is made in DIN 96x96 format and the module dimensions are 96x96mm.

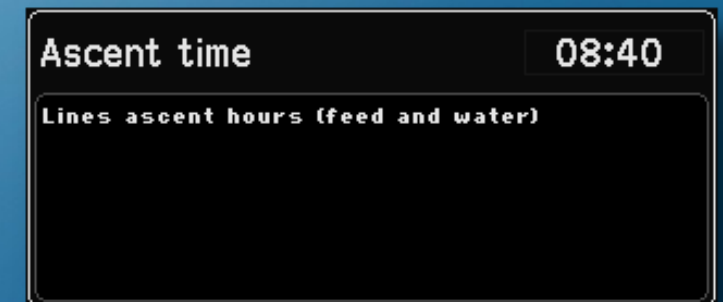


The user interface is easy and friendly. The easy touch screen system gives both the typical "easy to use" approach of a touch screen system and the strength and mechanical protection of a polycarbonate IP54 keyboard.

At every screen the function keys display a different graphic making the program very user friendly.

The user can select the display language: all the wordings, acronyms and "help" texts for programming assistance will be displayed in the chosen language.

Each programming step has its own help screen so the program has a "built in" instruction manual.

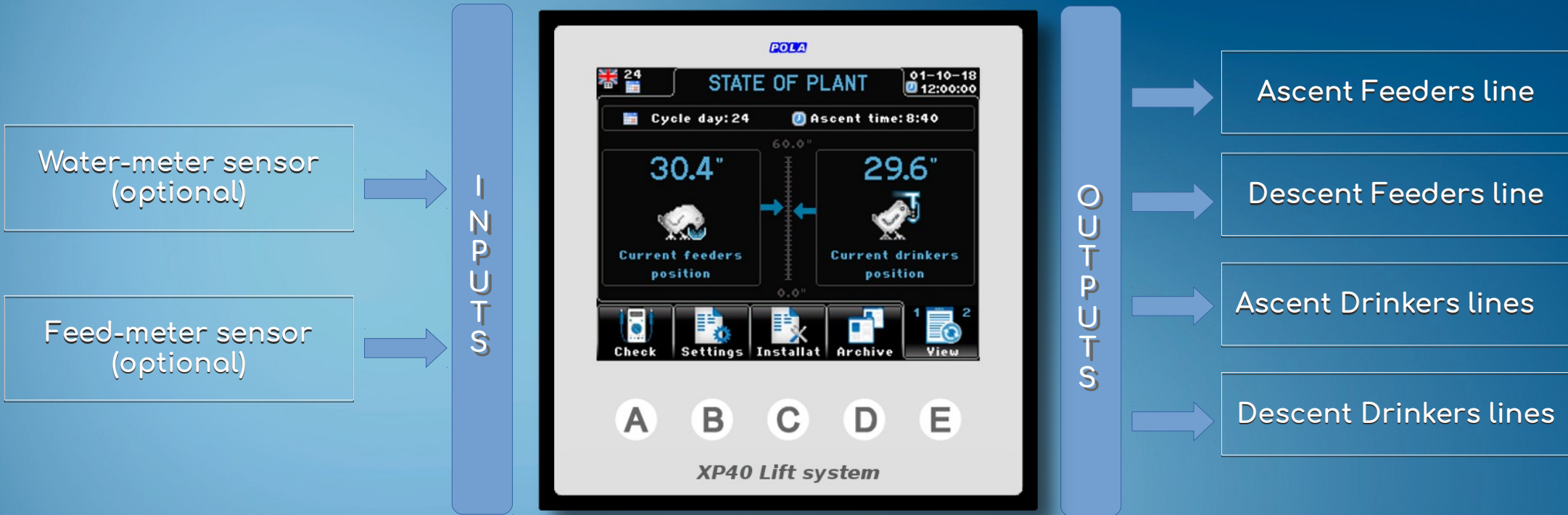


XP40 manages the up/down lift of mangers and drinkers according to an independent daily lift calendar



XP40 manages the up/down lift of mangers and drinkers according to an independent daily lift calendar. Besides this automatic lift function you can also control water and feed consumption by connecting a watermeter and a feedmeter so you can record the daily and total consumption during the whole cycle.

Inputs and outputs



Other available connections

→ USB plug

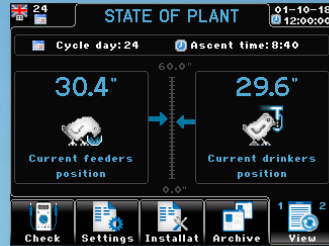
XP40 has a USB plug on the back.

When selecting the USBP option you can get a USB plug with a (IP65) protection cap externally mounted so you can access the USB without having to go to the back of the unit.

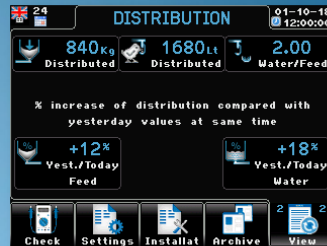
Sample screenshots



Viewing screens



Viewing operating condition



Viewing operating condition



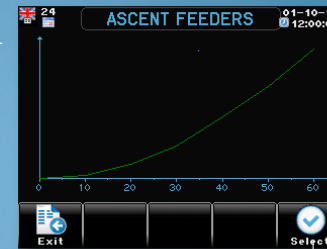
Settings screens



Settings selection



Feeders alendar setting



Ascend feeders calendar curve



Ascend feeders calendar settings



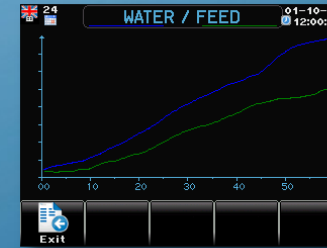
Archive screen



Archives to display selection

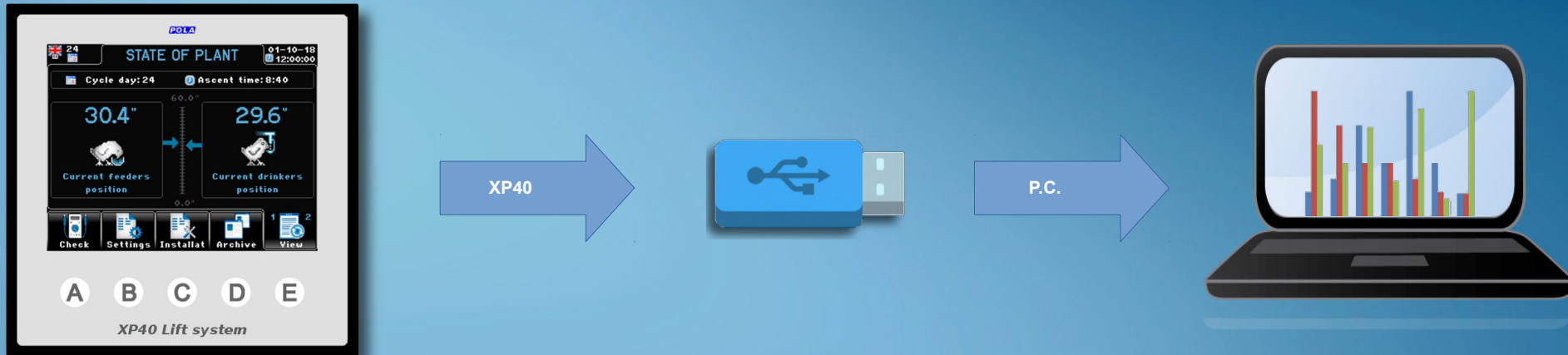


Daily feeding archive



Feed & Water charts

Data transfer



The communication with the outside world is performed by USB key.

→ **Export archives**

XP40 save in the USB memory a file containing all the day by day recorded data of the cycle.

Connecting the USB key to a PC and by using the XP40 Dialogue software you can browse the recorded data in grid or graph formats.

→ **Importing / saving the setting**

You can save a file with all back-up infos on a USB file.

Saved settings can be uploaded on XP40 anytime by a user friendly procedure.

Available options

<i>Model</i>	<i>Description</i>
XP40	Mangers and drinkers module
<i>----- Options -----</i>	
W01	IP54 box for wall mounting + gasket + transparent cover
USBP	USB IP65 external plug (to be mounted externally, for access to the USB without the need to access the back of the XP40)
CWD	Water-counter



Available options



USBP



CWD

POLA

www.pola.it

40th

40 YEARS OF INNOVATION